

Committee for Economic Development of Australia

'Urban Water Forum'

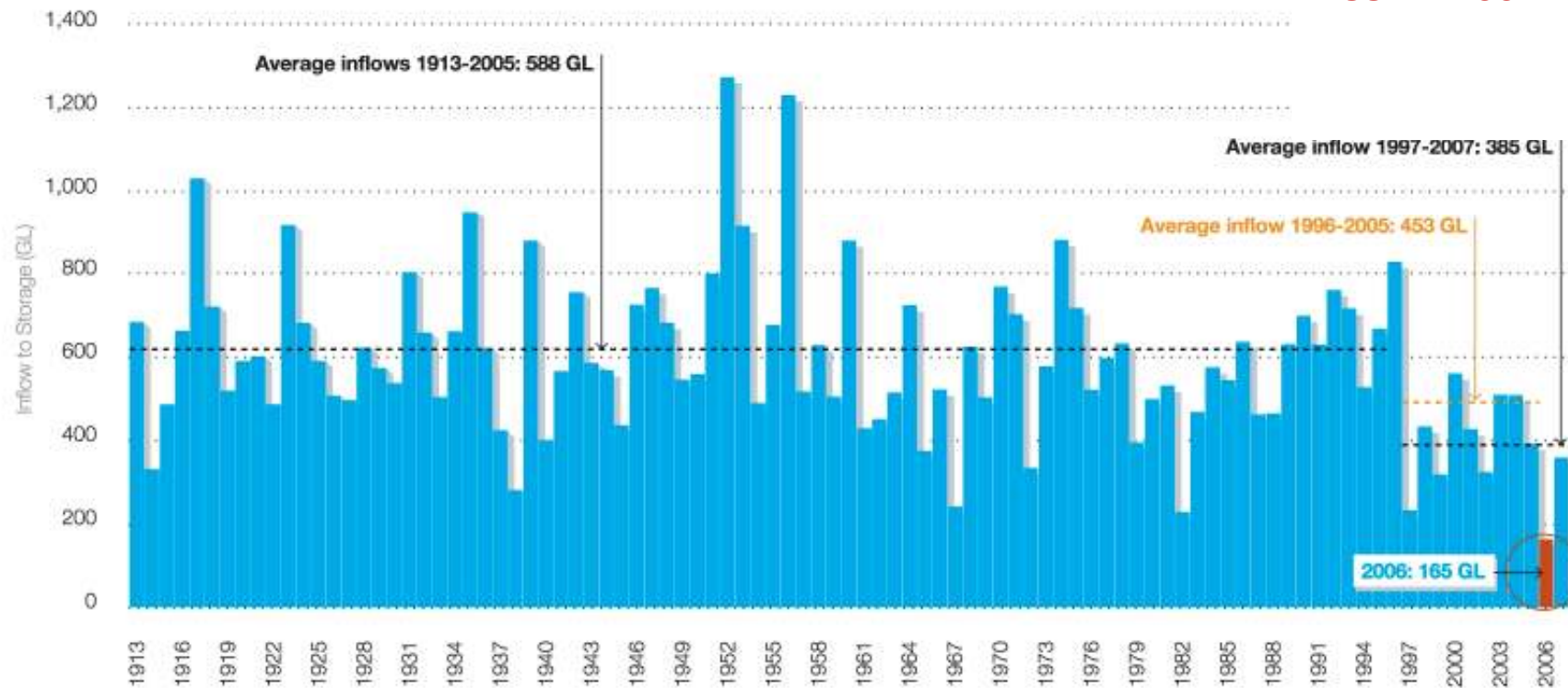
The Hon Tim Holding MP
Minister for Water

Friday 19 September 2008

Water security under threat

Melbourne storage inflows 1913 – 2007

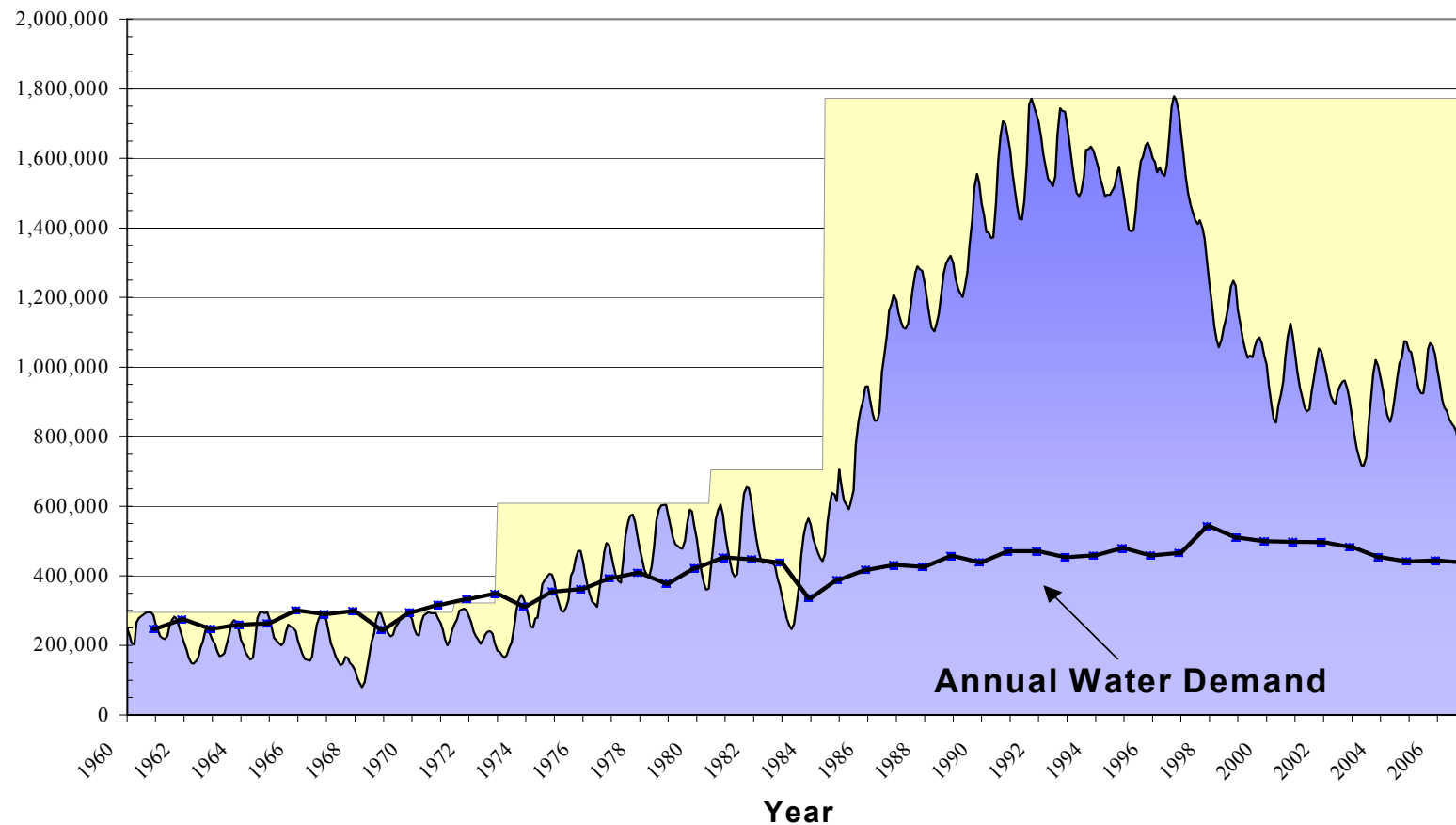
Inflows in 2006 were the worst in recorded history



1997 – 2007 Average

385 GL

Melbourne Storage Volume and Annual Demand (ML)



Source: Melbourne Water

Note: - Thomson Reservoir built in 1984. Filled in 1996.

Victoria's Water Plan – The Next Stage

\$4.9 billion investment – Saving, creating and sharing water

- Desalination plant
- Modernising irrigation infrastructure
- Expanding Victoria's Water Grid
- Increasing recycling
- Extending conservation



Desalination – rainfall independent

- **Rainfall independent supply**
- **150 billion litres a year**
- **Delivery late 2011**
- **Secure supplies: Melbourne, Geelong and towns in Westernport and South Gippsland.**



Northern Victoria Irrigation Renewal Project

425GL in savings:

- **175GL to stressed rivers**
- **175GL to Irrigators**
- **75GL to Melbourne**

Early Works program, winter 2008:

- **1000 automated gates installed**
- **More than 400 local jobs created**
- **Commonwealth in-principle funding of up to \$1 billion for Stage 2**





Victorian Water Grid Sugarloaf Pipeline

- **70km pipeline connecting Goulburn River to Sugarloaf Reservoir**
- **Transfer Melbourne's 75GL share of irrigation upgrade savings**
- **Most rigorous environmental assessment for a pipe in Victorian history**
- **State and Commonwealth approval granted**
- **Construction began yesterday**
- **On schedule to supply water in 2010**



Victorian Water Grid Goldfields Superpipe

- **Connects Bendigo and Ballarat to water supplies in the Goulburn system**
- **\$278 million project fast-tracked**
- **46.5km Bendigo leg completed September 2007**
- **87km Ballarat leg completed completed May 2008**
- **Victoria's two largest regional cities would have run out of water without this lifeline**



Victorian Water Grid Wimmera Mallee Pipeline

- **\$688 million project, fast-tracked for completion six years ahead of schedule in 2010**
- **Replacing 16,000km of leaky open channels with 8800 km of piping**
- **Will deliver 103 billion litres in water savings, including 80 billion litres for stressed rivers**



Victorian Water Grid Hamilton-Grampians Pipeline

- **Wannon Water Corporation project**
- **52km pipeline – Rocklands Reservoir to Hamilton system**
- **\$30 million**
- **Construction start next April – water flowing mid-2010**



Victorian Water Grid Melbourne-Geelong Pipeline

- **Barwon Water Corporation project**
- **55km pipeline**
- **16 billion litres a year**
- **\$120 million cost after concept design**
- **Business case completed by December 2008**



Recycling on the rise

- **22.5% in Melbourne in 2007, up from 2% per cent in 1999.**
- **Melbourne uses more recycled water than any other Australian capital city.**
- **Uses include industry, sportsgrounds, nurseries, residential housing and agriculture.**

Expanding recycling

- **Eastern Treatment Plant upgraded to produce 100GL of high quality recycled water from 2012**
- **Business case exploring potential uses, including:**
 - **Latrobe Valley – industry use (eg power station cooling)**
 - **Yarra River – complement/replace environmental flows**



Saving Water

Conservation

- More than 100 billion litres saved in Melbourne each year
- Consumption has reduced by 28.6% compared with 1990s.
- 60-year per capita low in 2007, with city using 69GL less than in 2006.

Industry

- 25% reduction

